

**Solidaridad**



# **SUSTAINABLE PRODUCTION LANDSCAPES SOLIDARIDAD'S APPROACH**

Katie Minderhoud, Solidaridad NL

28<sup>th</sup> of March 2014 - Amsterdam  
CHOCOA Conference

# **PRESENTATION OUTLINE**

**INTRODUCTION: COCOA**

**CLIMATE CHANGE**

**LANDSCAPE APPROACH**

# CHALLENGES IN COCOA PRODUCTION

## SOCIAL & ENVIRONMENTAL

### Profit

Low productivity & low quality → low income

### Poverty

No access to credit

No investment in sustainable cocoa farming

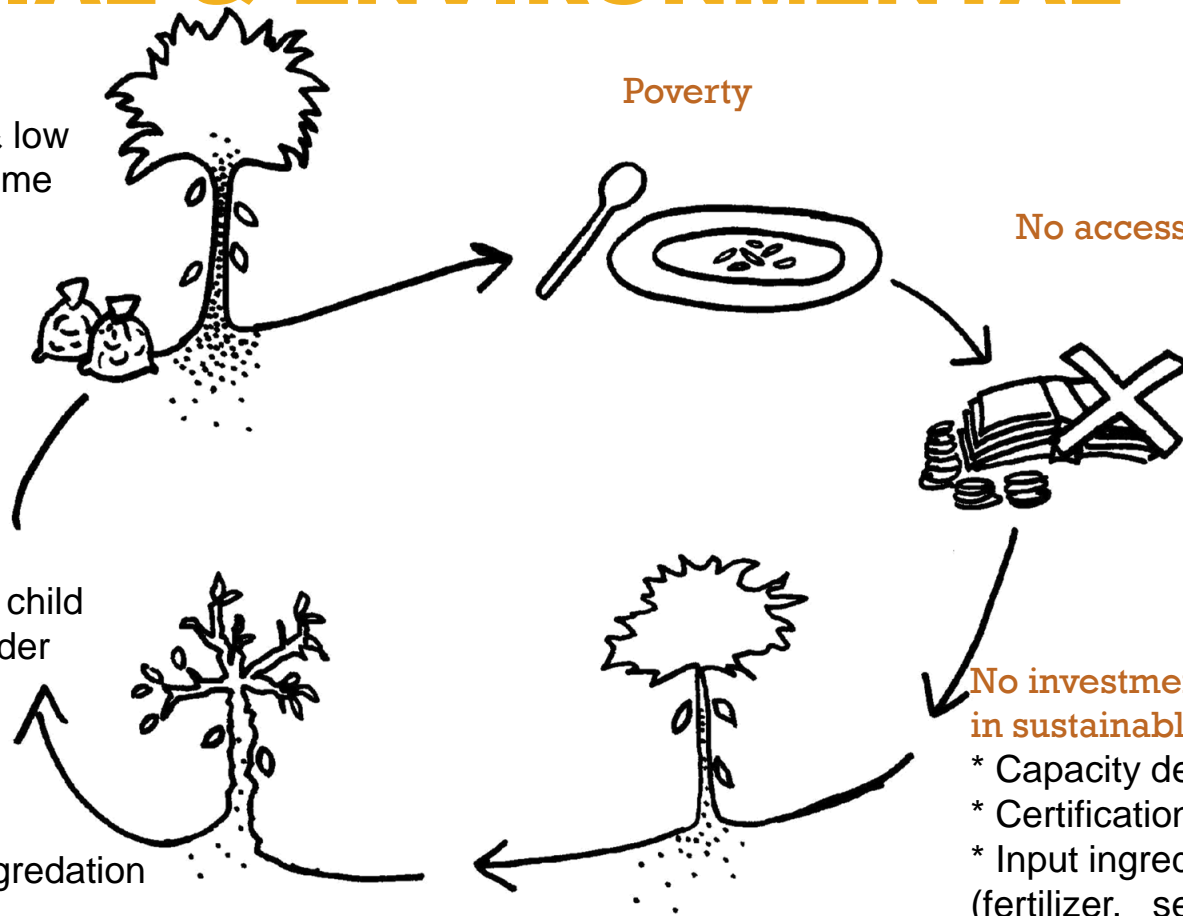
- \* Capacity development
- \* Certification systems
- \* Input ingredients (fertilizer, seedlings etc.)
- \* Grouping of Farmers

### People

Poor working conditions, child labour\* & trafficking, gender

### Planet

Ageing trees, diseases, exhausted soils, land degradation



(\*1,8 million children just in Ivory Coast and Ghana)

# FARMER TRAINING PROGRAM

Year 1

Year 2

Year 3

Year 4



- Training /ToT in Good Agricultural Practises, Internal Control Systems and enterprise development
- Grouping and organisation of farmers
- Certification
- Training on social awareness (e.g. Child labour, gender, OHS)



- Access to credit
- Access to fertilizers and other input ingredients



- New planting materials
- New grafting techniques

- Professionalisation of Farmer Organisations
- Support Beyond Certification (e.g. Income diversification, Food Security, Climate)



# SOLIDARIDAD WITH PARTNERS REALISED 2008 – 2012

**20-30%**  
YIELD  
INCREASE

**28%**  
INCOME  
GROWTH

**65%**  
OF WOMAN  
MORE  
INCOME

**151.000**  
CERTIFIED  
FARMERS

**414.000**  
TONS COCOA  
SUSTAINABLE

**98%**  
QUALITY  
BEANS

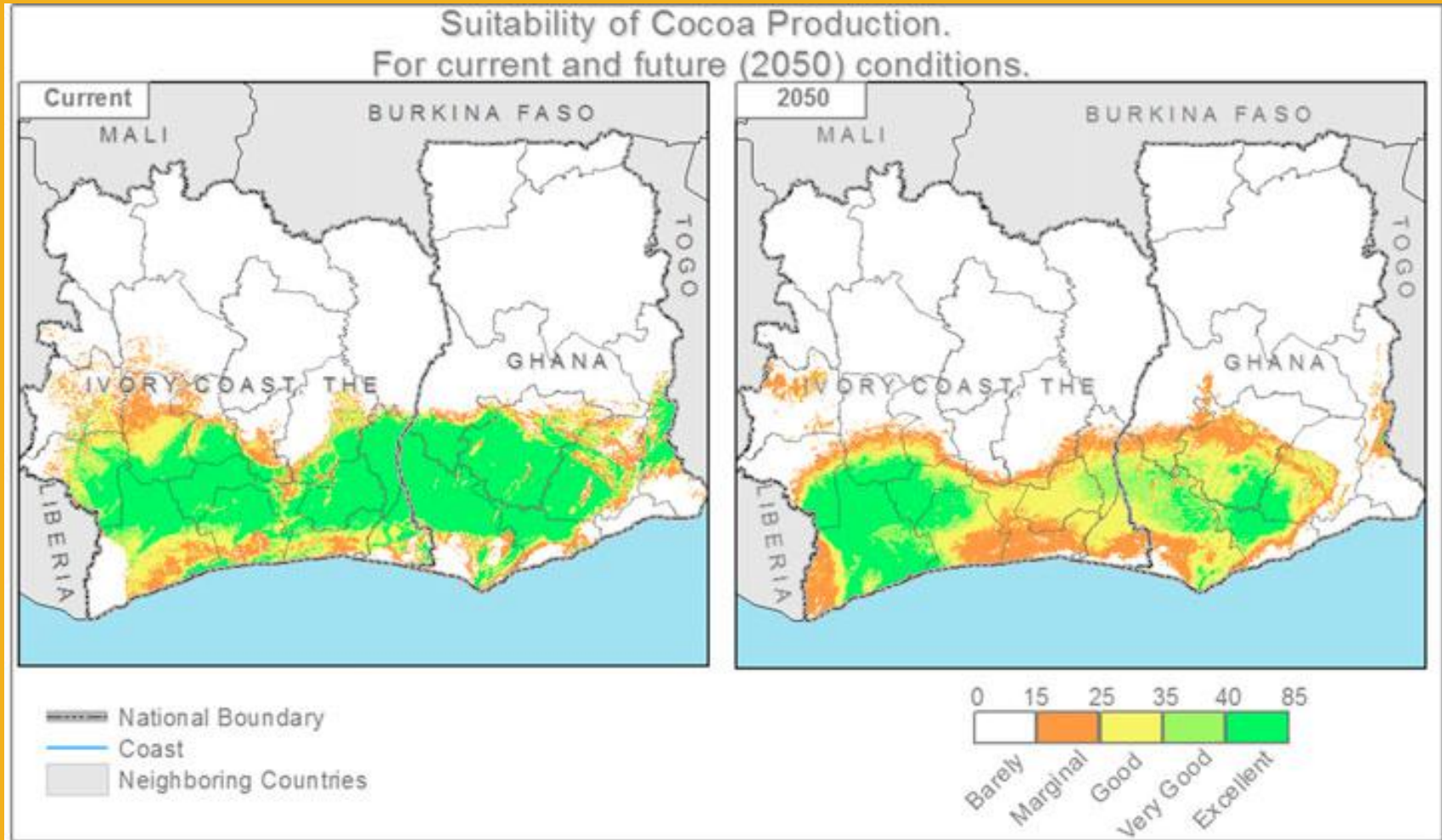
Source(s):

KPMG (2013) 'Moving the bars', commissioned by Solidaridad, UTZ Certified and IDH.

LEI (forthcoming, 2013) 'Towards sustainable cocoa' baseline and impacts of Cargill and Solidaridad cocoa farming support activities Ivory Coast 2008-2012.

COSA (forthcoming, 2013), Cocoa Farms in Ghana, commissioned by UTZ Certified.

# CLIMATE CHANGE IMPACT RESILIENT COCOA FARMERS

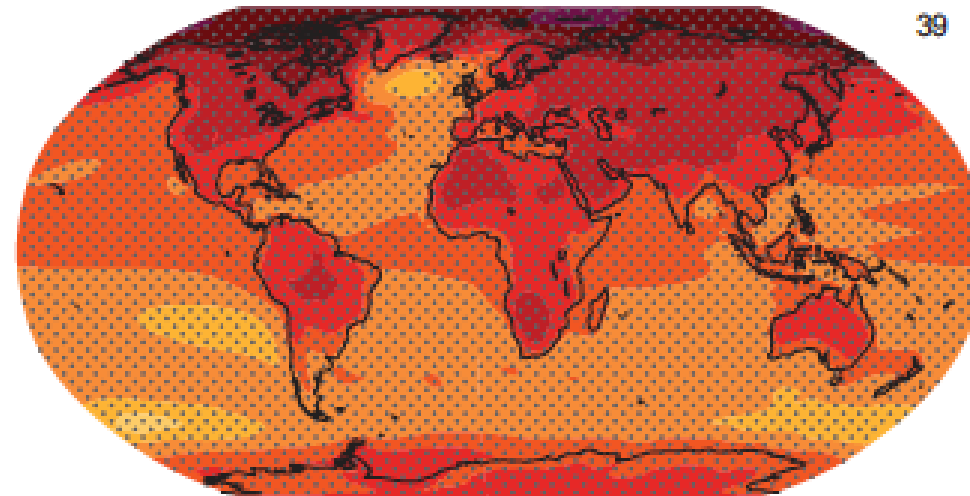
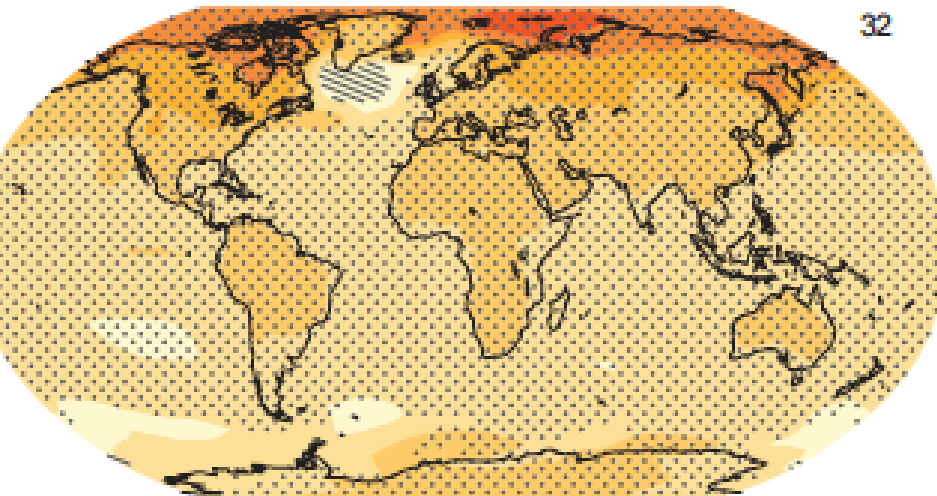


# A WARMING WORLD: 0.3-0.7°C IN 20-30 YEARS 1.5-4.8 °C BY END OF CENTURY

RCP 2.6

RCP 8.5

Change in average surface temperature (1986–2005 to 2081–2100)





**SHIFTING RAINFALL:  
PRECIPITATION HAS BEEN  
VARIABLE AND EXTREME**



## **ADAPTATION (IPCC, 2007):**

**ADJUSTMENT IN NATURAL OR HUMAN SYSTEMS IN RESPONSE TO ACTUAL OR EXPECTED CLIMATIC STIMULI OR THEIR EFFECTS, WHICH MODERATES HARM OR EXPLOITS BENEFICIAL OPPORTUNITIES**

# ADAPTATION AS A SERIES OF MULTIPLE DIMENSIONS:

## WHAT DEGREE OF ADJUSTMENT IS DESIRABLE OR NECESSARY?

PREVENT

PROTECT/MAINTAIN

CHANGE

RETREAT



# ON-FARM: ECOLOGICAL

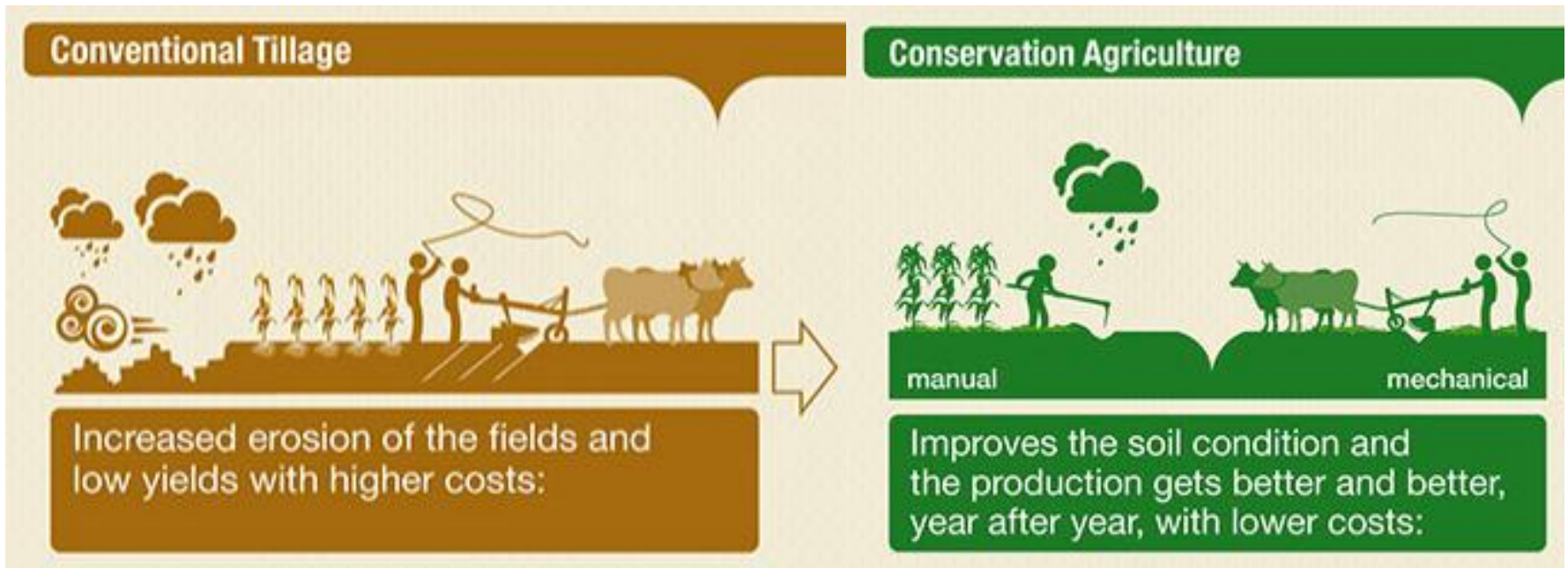
## DIVERSIFY CROPS

## LAND USE IMPROVEMENT

## ALTER PLANTING TIME

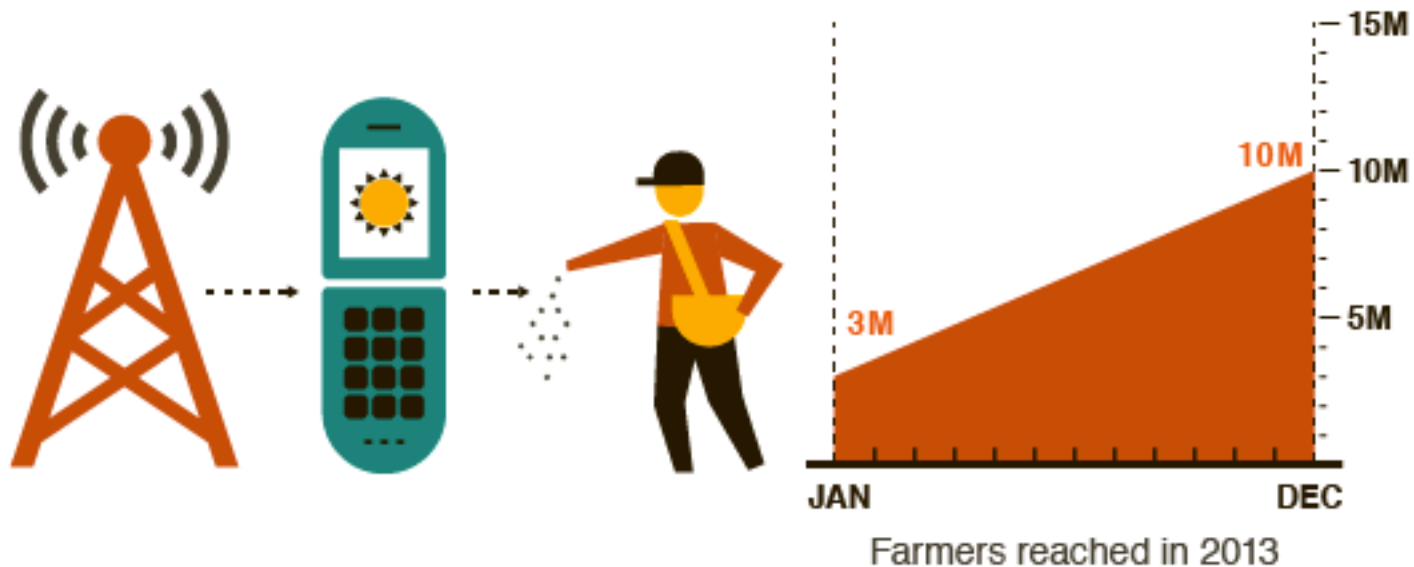
## CHANGE CROP

## CHANGE LOCATION



# ON-FARM: TECHNOLOGICAL NEW CROP VARIETIES CLIMATE INFO SYSTEMS RESOURCE MGMT INNOVATION

In India, the Integrated Agrometeorological Advisory Services delivers crucial weather info to farmers to help them adapt. It aims to exceed its target of **10 MILLION FARMERS** in 2014.

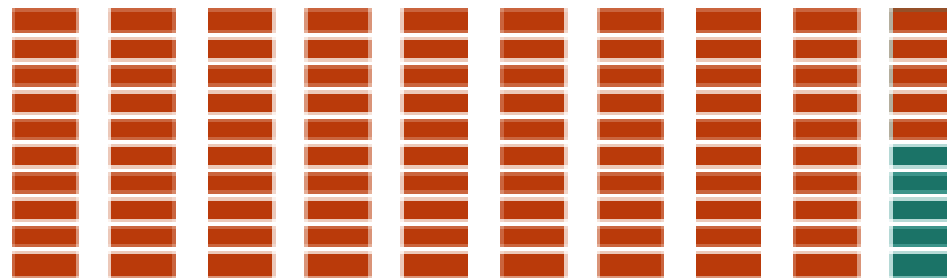


Source: Aggarwal, 2013

# **SUPPORT: FINANCIAL SUBSIDIES INSURANCE DIVERSIFY INCOME NEW MARKET OUTLET**

**MITIGATION RECEIVED 95%**

of total global climate finance



**ADAPTATION RECEIVED 5%**

Source: Buchner et al., 2012

---

# SUPPORT: POLICY-LEVEL EXTENSION & EDUCATION INFRASTRUCTURE IMPROVEMENTS RESOURCE MANAGEMENT AID POLICIES & REGULATIONS



**WHAT MAKES FARMERS  
RESILIENT?**

**WHAT DOES IT TAKE TO GET  
THERE TOGETHER?**





# **BEYOND SUPPLY CHAIN LANDSCAPE APPROACH**



# **BEST PRACTICES IN GHANA: COCOA-AGROFORESTRY**

**IN PARTNERSHIP WITH WWF:**

**FROM ILLEGAL LOGGING AND  
COMPETING LAND CLAIMS**

**TO COCOA PRODUCER SUPPORT +  
SUSTAINABLE FOREST MGNT**

**ENGAGE AT COMMUNITY  
AND POLICY LEVEL**



# **SUSTAINABLE PRODUCTION LANDSCAPES**

**OPTIMIZE RESOURCE USE**

**MULTIPLE FUNCTIONS**

**WORK ACROSS SECTORS**

**STAKEHOLDER PARTICIPATION**

# OPPORTUNITIES IN COCOA PRODUCTION

## SOCIAL & ENVIRONMENTAL

### Profit

High productivity & high quality → income increase

sustainable livelihood

Access to credit / markets

Investment in sustainable cocoa farming

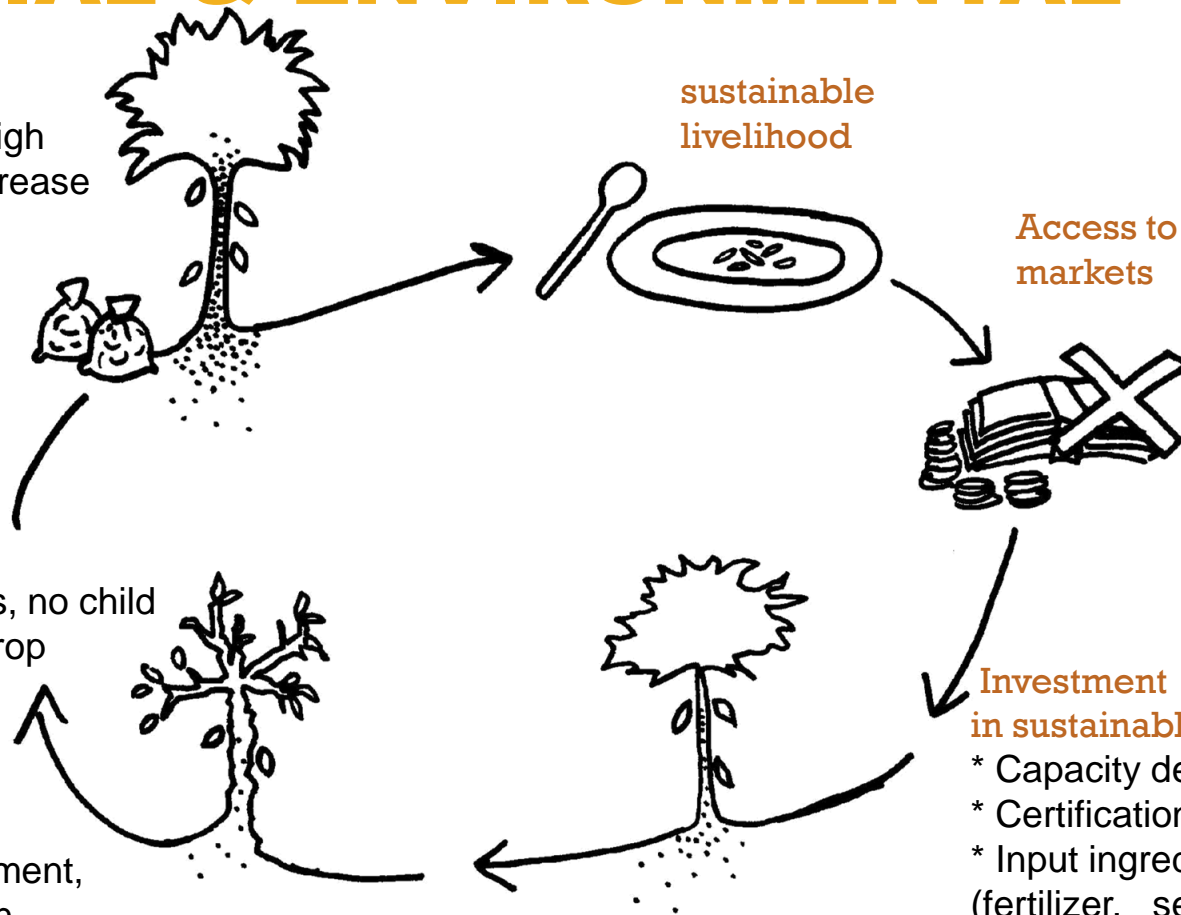
- \* Capacity development
- \* Certification systems
- \* Input ingredients (fertilizer, seedlings etc.)
- \* Grouping of Farmers

### People

Better working conditions, no child labour, diversified food crop production

### Planet

Replanting, soil management, shade trees, reforestation, biodiversity, ecosystem functions



# **KATIE MINDERHOUD**

**KATIE.MINDERHOUD@SOLIDARIDAD.NL**



solidaridadnetwork.org



/solidaridadnetwork



@solidaridadnetw



/company/solidaridad